

ASKUBAL®



ASKUBAL
GAMA DE PRODUSE PENTRU
INDUSTRIA ALIMENTARA

RELIABLE PERFORMANCE IN A
CHALLENGING ENVIRONMENT

ASK FOOD-LINE

Bakery
equipment

Poultry, meat
and fish
processing

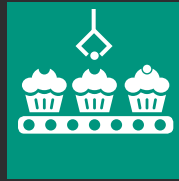
Bottling plants

Food
processing
machinery

Food
packaging
machinery

Dairy
products

Grinders
and mills



*Echipamente
pentru brutarii*

*Procesarea
carnii*

*Fabrici de
imbuteliere*

*Echipamente
pentru
procesarea
hranei*

*Echipamente
pentru
ambalarea
mancarii*

Produse lactate

*Mori si
masini de tocat*

High-duty rod ends
and spherical plain bearings
Articulatii din otel inox

Bearings
Rulmenti din otel inox

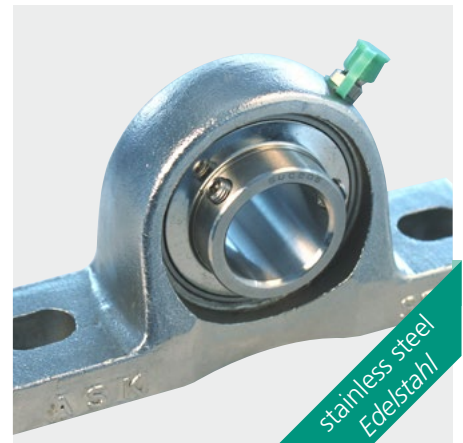
Housing units
**Lagare cu rulmenti
incorporati din otel inox**



stainless steel
Edelstahl



stainless steel
Edelstahl



stainless steel
Edelstahl

K(L) 5-(D)NR(BF) – K(L) 30-(D)NR(BF)
G 5-(D)NR(BF) – G 30-(D)NR(BF)
S 6-(D)NR(BF) – S 30-(D)NR(BF)

SS6000 – SS6010 SS6200 – SS6210
SS6300 – SS6310

MUCP 204 – 210 MUCF 204 – 210
MUCFL 204 – 210 MUCT 204 – 210

Housing units

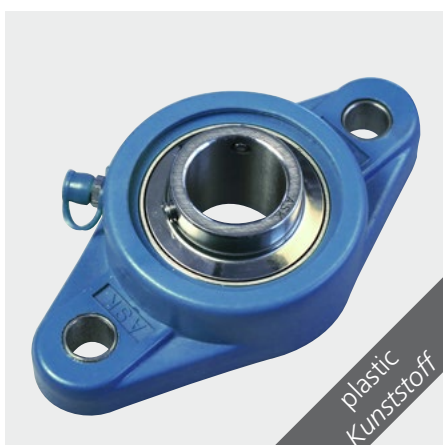
**Lagare cu carcase din plastic si
rulmenti din otel inox**

Steel balls

Bile din otel inox

Food grease

**Unsoare pentru industria
alimentara**



plastic
Kunststoff



stainless steel
Edelstahl

e.g.
z.B.

FDA 21 CFR
DIN 51825 KPF1K-20
DIN 51825 KPF2K-20
Kosher/Parve/Halal

On request
Auf Anfrage

PUCP 204 – 210 PUCPA 204 – 208
PUCF 204 – 210 PUCFL 204 – 210
PUCT 204 – 208

1/16" – 25mm