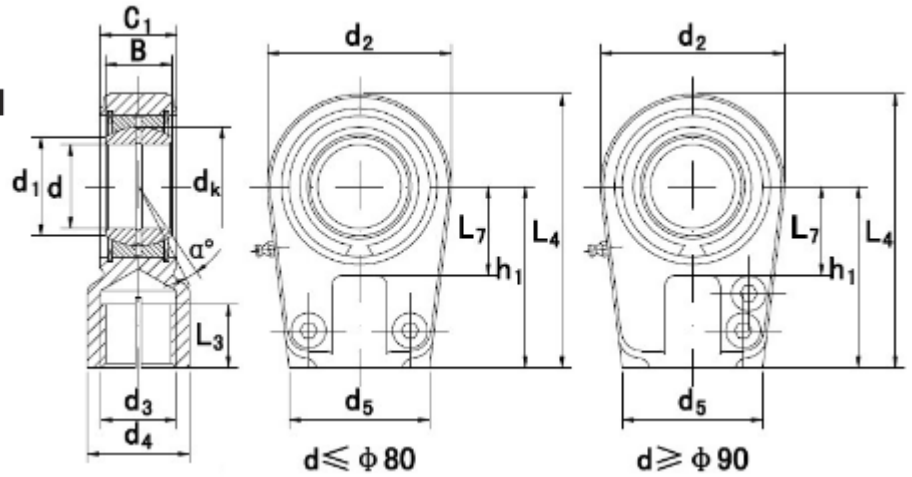


Mating materials:
Steel on steel
Maintenance required

**GIHR-K .. -
DO**

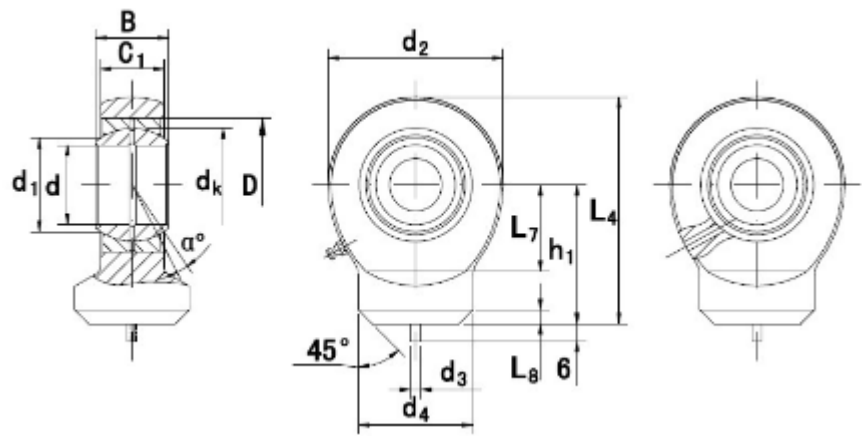


Part No.	Dimensions mm												load ratings KN		weight kg		
	d	d3 6H	d4	L3 min	B	C1	d2	L7 min	h1	L4	d5	d1	dk	a		dyn. ≈ C	stat. C0
GIHR-K20DO	20	M16x1.5	25	17	16	19	56	25	50	80	46	24.2	29	9	30.0	72.0	0.43
GIHR-K25DO	25	M16x1.5	25	17	20	23	56	28	50	80	46	29.3	35.5	7	48.0	72.0	0.48
GIHR-K30DO	30	M22x1.5	32	23	22	28	64	30	60	94	50	34.2	40.7	6	62.0	106	0.74
GIHR-K35DO	35	M28x1.5	40	29	25	30	78	38	70	112	66	39.8	47	6	80.0	153	1.20
GIHR-K40DO	40	M35x1.5	49	36	28	35	94	45	85	135	76	45.0	53	7	100	250	2.00
GIHR-K50DO	50	M45x1.5	61	46	35	40	116	55	105	168	90	55.9	66	6	156	365	3.80
GIHR-K60DO	60	M58x1.5	75	59	44	50	130	65	130	200	120	66.8	80	6	245	400	5.40
GIHR-K70DO	70	M65x1.5	86	66	49	55	154	75	150	232	130	77.9	92	6	315	540	8.50
GIHR-K80DO	80	M80x2.0	105	81	55	60	176	80	170	265	160	89.4	105	6	400	670	12.0
GIHR-K90DO	90	M100x2.0	124	101	60	65	206	90	210	323	180	98.1	115	5	490	980	21.5
GIHR-K100DO	100	M110x2.0	138	111	70	70	231	105	235	360	200	109.5	130	7	610	1120	27.5
GIHR-K110DO	110	M120x3.0	152	125	70	80	266	115	265	407.5	220	121.2	140	6	655	1700	40.5
GIHR-K120DO	120	M130x3.0	172	135	85	90	340	140	310	490	257	135.5	160	6	950	2900	76.0

ASKUBAL Rod ends and spherical bearings

Mating materials:
Steel on steel
Maintenance required

GK .. -DO

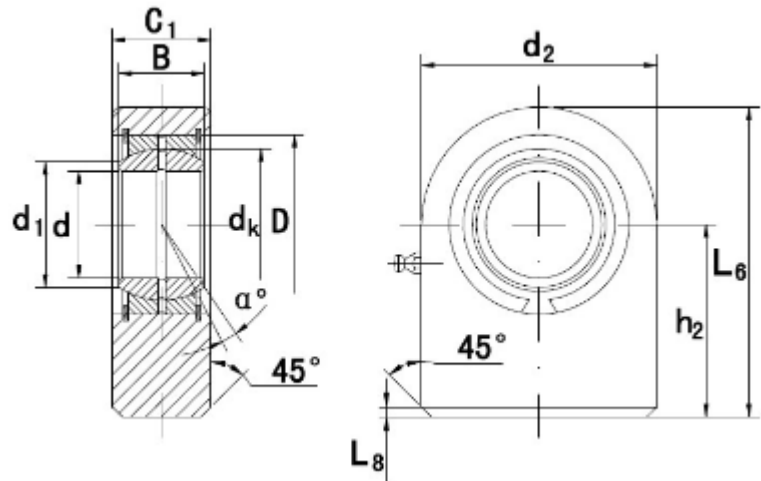


Part No.	Dimensions mm													load ratings KN		weight kg	
	d	d3	d4	B	C1	d2	L7 min	L8	h2	L4	dk	d1	D	a	dyn. ≈ C		stat. C0
GK10DO*	10	3	38.515	9	7	29	15	1.5	24	38.515	16	13.2	19	12	8.15	15.6	0.041
GK12DO*	12	3	17.5	10	8	34	18	1.5	27	17.5	18	15.0	22	11	10.8	21.6	0.066
GK15DO	15	4	21	12	10	40	20	2.0	31	21	22	18.4	26	8	17.0	32.0	0.12
GK17DO	17	4	24	14	11	46	23	2.0	35	24	25	20.7	30	10	21.2	40.0	0.19
GK20DO	20	4	27.5	16	13	53	27.5	2.0	38	27.5	29	24.2	35	9	30.0	54.0	0.23
GK25DO	25	4	33.5	20	17	64	33	3.0	45	33.5	35.5	29.3	42	7	48.0	72.0	0.43
GK30DO	30	4	40	22	19	73	37.5	3.0	51	40	40.7	34.2	47	6	62.0	95.0	0.64
GK35DO	35	4	47	25	21	82	43	3.0	61	47	47	39.8	55	6	80.0	125	0.96
GK40DO	40	4	52	28	23	92	48	4.0	69	52	53	45.0	62	7	100	156	1.30
GK45DO	45	6	58	32	27	102	52	4.0	77	58	60	50.8	68	7	127	208	1.80
GK50DO	50	6	62	35	30	112	59	4.0	88	62	66	55.9	75	6	156	250	2.50
GK60DO	60	6	70	44	38	135	72.5	4.0	100	70	80	66.8	90	6	245	390	3.90
GK70DO	70	6	80	49	42	160	86	5.0	115	80	92	77.9	105	6	315	510	6.60
GK80DO	80	6	95	55	47	180	98	5.0	141	95	105	89.4	120	6	400	620	8.70

ASKUBAL Rod ends and spherical bearings

Mating materials:
Steel on steel
Maintenance required

GF .. -DO



Part No.	Dimensions mm										load ratings KN		weight kg
	d	B	C1	d2	L6	h2	dk	d1	D	L8	dyn. C	stat. Co	
GF15DO	15	12	16	45	53.5	2	31	22	18.4	26	17	53	0.22
GF16DO	16	14	17.5	48	59	2	35	25	20.7	30	21.2	59	0.29
GF17DO	17	14	17.5	48	59	2	35	25	20.7	30	21.1	65	0.29
GF20DO	20	16	19	50	63	2	38	29	24.2	35	30.0	67.0	0.35
GF25DO	25	20	23	55	72.5	2	45	35.5	29.3	42	48.0	69.5	0.53
GF30DO	30	22	28	65	83.5	2	51	40.7	34.2	47	62.0	118	0.87
GF35DO	35	25	30	83	102.5	2	61	47	39.8	55	80.0	196	1.50
GF40DO	40	28	35	100	119	3	69	53	45.0	62	100	300	2.40
GF45DO	45	32	40	110	132	3	77	60	50.8	68	127	380	3.40
GF50DO	50	35	40	123	149.5	3	88	66	55.9	75	156	440	4.40
GF60DO	60	44	50	140	170	4	100	80	66.8	90	245	570	7.10
GF70DO	70	49	55	164	197	4	115	92	77.9	105	315	695	10.5
GF80DO	80	55	60	180	231	4	141	105	89.4	120	400	780	15.0
GF90DO	90	60	65	226	263	4	150	115	98.1	130	490	1340	23.5
GF100DO	100	70	70	250	295	4	170	130	109.5	150	610	1500	31.5
GF110DO	110	70	80	295	332.5	4	185	140	121.2	160	655	2160	48.5
GF120DO	120	85	90	360	390	4	210	160	135.5	180	950	3250	79.0