



KG[®] Bearings



POWER²PERFORM Series

THE BEARING PEOPLE

KG International is one of the leading organizations in the Bearings Industry. Our Bearings made to strict Quality Standards are best suited to the needs of Original Equipment Manufacturers.

Manufacturing facilities located in Asia are certified with ISO/TS 16949 Standards offering reliability to our end customers. KG-P2P Series is specially developed considering the OEM requirements.

Our 300,000 sq.ft. central logistics hub at Jebel Ali Free Zone, Dubai, has brought us closer to our customers. Being located at the crossroads of the world's major trade routes has helped us achieve quicker deliveries and shorter turn around times.

For over four decades, our motivation has been to continually outperform and exceed customer expectations. The secret of our success, is our straightforward policy, which we never deviate from, i.e. the customer comes first and everything else is secondary.

POWER²PERFORM Series is an OEM -focused approach with a strong belief in continued improvement. This series is specially developed to meet critical and noise-sensitive application requirements and is hailed as a 'value beyond money' product.

Product Features

- Energy efficient Bearing
- Best suited for higher operating speed
- Many variants for vibration and noise requirement
- Grease variants for grease quality and quantity
- Cage (steel/brass/polyamide/nylon) variants
- Thermal-stabilized Bearings for high temperature applications
- Design features for specific application requirements
- Precision class P6, P5, P4
- Various seal design features such as low-contact seals
- Special radial clearance for motor & high speed application
- Special design for vibratory/shaker screen applications

ISO Certification



MANUFACTURING FACILITIES



OUR PRODUCTS

Deep Groove Ball Bearings

- Series: 60xx, 62xx, 63xx, 64xx, 67xx, 68xx, 69xx, 160xx
- Contact/non-contact seals/metallic shield
- Clearance, precision, vibration, noise and grease variants
- Snap Ring and Snap Ring Groove NR/N Type Bearings
- Stainless Steel Bearings
- Inch Series Bearings also available

Miniature Bearings

- 60x series
- 62x series
- 63x series
- 68x series
- 69x series
- Bearings with flange design
- Clearance, precision, cage variants



Angular Contact Ball Bearings

- Single-row/Double-row
- A/B/C and AC Contact Angle
- Steel/Brass/Nylon Cage options
- Precision class P6/P5/P4

Spherical Roller Bearings

- 213xx, 222xx, 223xx, 230xx, 231xx, 232xx, 239xx, 240xx, 241xx series
- GE series (Spherical Plain Bearings)
- Radial Clearance C2/CN/C3/C4/C5
- Steel/Brass Cage (CC/CA/MB)



Taper Roller Bearings

- 302xx, 303xx, 320xx, 322xx, 323xx series
- 330xx, 331xx, 332xx series
- Double-row/four-row with different design arrangements
- Precision class P6/P5/P4
- Inch Series Bearings also available



Cylindrical Roller Bearings

- N, NF, NJ, NU, NUP series
- NNxxx/NNUxxx Series
- Higher load capacity
- Steel/ Brass Cage
- Special clearance
- Precision class P6/P5/P4



Thrust Bearings

- Ball/Cylindrical Roller/Spherical Roller/Taper Roller Thrust Bearings
- Steel/Brass Cage
- Single-row/Double-row



Automobile Bearings

- 1st Generation, 2nd Generation & 3rd Generation Hub Units
- Steering Bearings
- One Way Clutch Bearings
- Wheel Bearings
- Air Conditioner Bearings



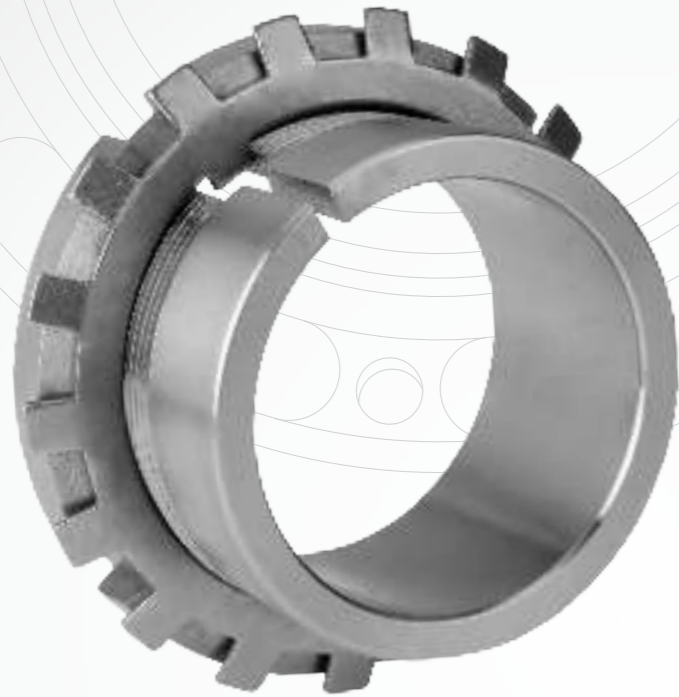
Ball Bearing Units

- UCP, UCPA, UCF, UCFC, UCFL, UCT, UCPH, UCHA, UKP, UKT, UKF, UKFL types
- Units with Stainless Steel Bearings
- Housing series available as per request
- Insert Bearings UC, UK, NA, AEL, SA & SB type

Needle Roller Bearings

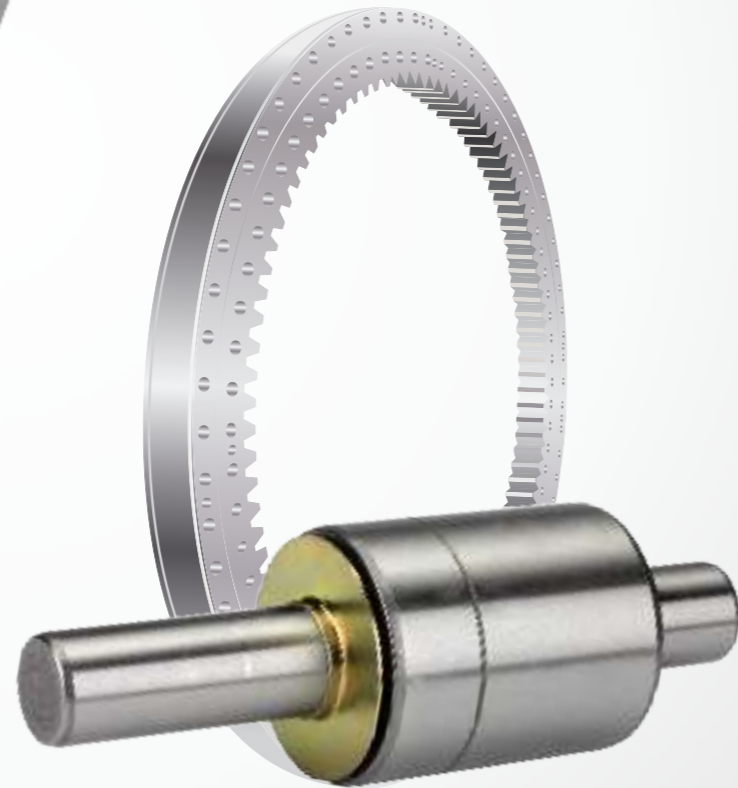
- Cage & needle assemblies
- Sealed versions
- Drawn cup & machined cup





Mounting & Dismounting Accessories

- Adapter Sleeves
- Withdrawal Sleeves
- Lock Nuts & Lock Washers



Special Bearings

- Machine Tool Bearings
- Water Pump Bearings
- Full Complement Cylindrical Roller Bearings (SL series)
- Four-row/Six-row Cylindrical Roller Bearings
- YRT series Bearings
- Slewing Ring Bearings and Slewing Drives

INDUSTRIES WE CATER TO

KG-P2P Bearings are being successfully used in the following applications

- Agricultural machinery
- Automobile industry
- Diesel engines
- Gearbox
- Home appliances like air conditioners, fans, grinding machines, Water Purifiers, Washing Machines, etc.
- Machine tool, power tools industry
- Marble cutting industry
- Mining & earthmoving equipments
- Petrochemical industry
- Plastic processing
- Process industries like steel, paper, sugar, cement, etc.
- Pumps, electric motors
- Stone crusher and construction industry
- Textile machinery
- Wind mills

Agricultural



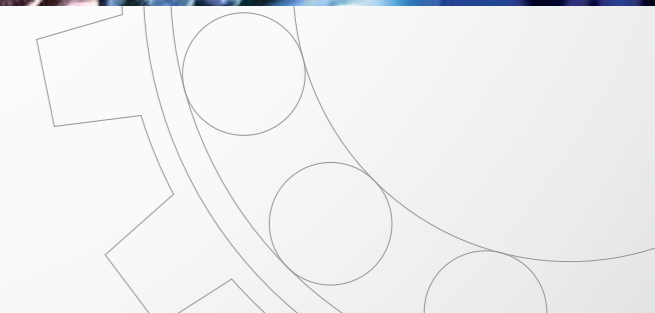
Automotive



Industrial



Appliances



ENGINEERING & TECHNICAL SUPPORT



KG-P2P Series Bearings are produced with careful selection of superior raw material, improved Bearing design and high control over dimensional accuracies, thus ensuring higher return on investments.

Our support extends to-

- Bearing selection/Bearing life calculation/Application engineering
- Performance analysis
- Inspection & testing of new as well as used Bearings
- Failure analysis and Bearing mounting, dismounting, workshop and training programs
- Dedicated product development team for customer specific requirements
- Global availability of materials with minimum lead time





www.kginternational.com

For technical and other queries, please visit our web site, www.kginternational.com or contact us at info@kginternational.com



KG International FZCO *The Movement Since 1968...*

An ISO Certified Company

P. O. Box 17122, Jebel Ali Free Zone, Dubai, UAE

T: +9714 8815547 F: +9714 8816423/ 8818509

E: info@kginternational.com W: www.kginternational.com



ENGLAND

DUBAI

INDIA